



# Burnidge Forest Preserve Ponds

## FISHERIES STATUS SUMMARY

**LOCATION** – Burnidge Forest Preserve is located at 38W235 Big Timber Road (1.4 miles west of Randall Road) near Elgin.

**DESCRIPTION** – There are two fishing ponds at Burnidge Forest Preserve. Burnidge West Pond is a 2.1 acre dug pond with a maximum depth of 14 feet. Burnidge East Pond is a 1.2 acre dug pond with a maximum depth of twelve feet. These ponds were dug in the early 1980's to provide a fishing area at what is now called Paul Wolff campground. The campground is owned by the Forest Preserve District of Kane County (FPDKC). There is good shoreline fishing access available to both ponds but there is a short walk (150 yards) required to access the East Pond.

**MANAGEMENT ACTIVITIES:** In 2014, the FPDKC entered into a cooperative management agreement with the Illinois Department of Natural Resources to facilitate fisheries management activities. A ten minute electrofishing survey on each pond took place on May 12, 2014. Management recommendations will be made to the FDDKC after all of the lakes have been surveyed.

**STATUS OF THE SPORT FISHERY** – While large fish were not sampled, largemouth bass and abundant bluegill should offer anglers plenty of action in the West Pond. The East Pond may have suffered some winterkill over the severe winter of 2013-14. Both of these ponds do offer decent access for kids fishing.

### Burnidge West Pond

**LARGEMOUTH BASS** – Fifteen largemouth bass were captured ranging in size from 3.7 to 13.1 inches. No large fish were captured in this survey indicating a potentially stunted population or a possible winterkill over the winter of 2013-14. Fifteen bass in a ten minute electrofishing survey is about the number we see in healthy bass populations. Presence of small fish in the sample indicates reproduction in this 2.1 acre pond.

**BLUEGILL** – Bluegill were incredibly abundant in our sample, with 138 fish caught in just ten minutes of sampling. Bluegill ranged in size from 3.2 to 7.2 inches, with the average size being 5.4 inches. Nineteen percent of the fish captured were over six inches. This would be a great pond to teach a youngster to catch fish!

**BLACK CRAPPIE** – Seven black crappie were captured. Averaging 7.0 inches, they ranged in size from 6.6 to 7.4 inches. The IDNR does not recommend stocking crappie in a pond of this size.

**ADDITIONAL FISH SPECIES:** Green sunfish, black bullhead and hybrid sunfish also occur in the West Pond.

### Burnidge East Pond

**LARGEMOUTH BASS** – We caught 12 largemouth bass in ten minutes of electrofishing for a rate of just over a bass a minute. This rate is good although we did not see any large bass. The bass ranged in size from 4.0 to 10.2 inches. Similar to the west pond the lack of large fish could indicate a potentially stunted population or possible winterkill over the winter of 2013-14. Presence of small fish in the sample indicates successful reproduction of largemouth bass.

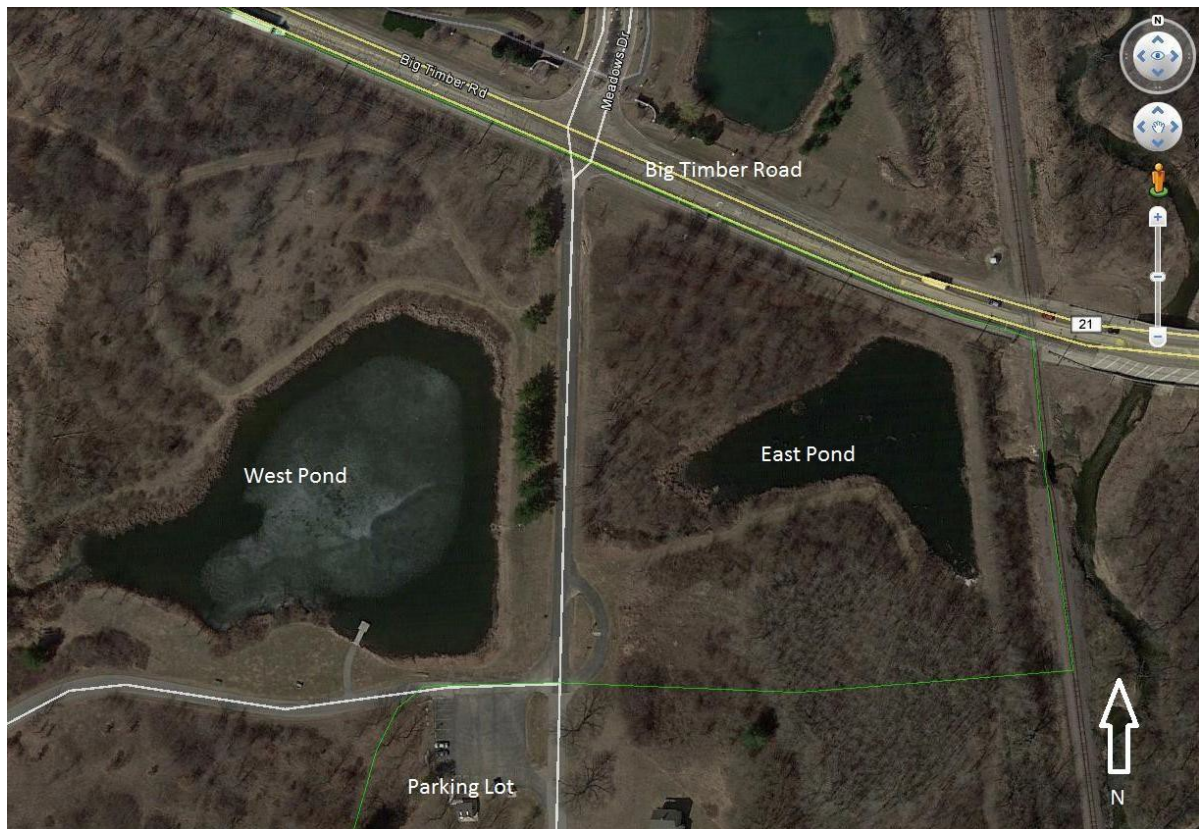
**BLUEGILL** – Unlike the West Pond, Bluegill were scarce in our sample. Only three bluegill ranging in size from 4.4 to 6.0 inches were captured.

**BLACK CRAPPIE** – Four black crappie were captured. Averaging 8.0 inches, they ranged in size from 7.7 to 8.9 inches. The IDNR does not recommend stocking crappie in a pond of this size.

**OTHER SPECIES** – One green sunfish was also captured in the East Pond.

Below are the detailed results from 10 minutes of electrofishing at each pond at the Burnidge Forest Preserve.

	Species	Number Collected	Length (Inches)			Weight (pounds)	
			Min	Max	Avg.	Min	Max
East Pond	Largemouth bass	12	4.02	10.24	7.01	0.03	0.49
	Black Crappie	4	7.68	8.90	8.03	0.22	0.35
	Bluegill	3	4.37	6.02	5.31	0.06	0.17
	Green sunfish	1	5.12	5.12	5.12	0.12	0.12
	Total # of Fish	20					
West Pond	Bluegill	138	3.19	7.20	5.41	0.04	0.28
	Largemouth bass	15	3.70	13.11	5.96	0.02	1.48
	Black crappie	7	6.57	7.36	7.00	0.13	0.18
	Green sunfish	4	4.96	5.71	5.35	0.10	0.15
	Hybrid sunfish	1	4.76	4.76	4.76	0.07	0.07
	Black bullhead	1	10.08	10.08	10.08	0.62	0.62
	Total # of Fish	166					



For more information call the Forest Preserve District of Kane County at (630) 232-5980 or IDNR Fisheries at (815) 675-2386 ext. 214 or visit: [www.kaneforest.com](http://www.kaneforest.com)

For general information on fishing in Illinois visit the IDNR Fisheries Division at: [www.ifishillinois.org](http://www.ifishillinois.org)

To purchase your fishing license go to: [www.dnr.illinois.gov](http://www.dnr.illinois.gov)

photo credit Google Earth