



# Harrier Lake

## 2020 FISHERIES STATUS SUMMARY

**LOCATION** – Harrier Lake is in Bartlett at the Pratt’s-Wayne Woods Forest Preserve located on the south side of Stearns Road - 1.3 miles west of Route 59.

**DESCRIPTION** – Harrier Lake is a 20 acre gravel quarry lake with a maximum depth of 25 feet and an average depth of 18 feet. It is owned by the Forest Preserve District of Dupage County (FPDDC). The lake is managed under a cooperative management agreement with the Illinois Department of Natural Resources. The lake and surrounding park are undeveloped and a few areas are cleared for shore fishing access. No watercraft are allowed.

**MANAGEMENT ACTIVITIES** – Harrier Lake initially was to be a “northern waters” fishery, stocked with Smallmouth Bass, Yellow Perch, Walleye and Pumpkinseed. Largemouth Bass and Bluegill made their way into the lake. Active removals of Largemouth Bass target this species twice a year in an attempt to build a Smallmouth Bass, Yellow Perch and Walleye population. The lake was managed as “catch and release” until 2017 when limited harvest was allowed (See Regulations on next page). The Spring survey took place on June 1<sup>st</sup>, 2020. **This survey was five weeks later than usual due to restrictions related to COVID-19.**

**STATUS OF THE SPORT FISHERY** – The three “focus” species (Smallmouth Bass, Yellow Perch and Walleye population) are still maturing with Walleye and Yellow Perch reaching their minimum size limits in the last few years (16 and 9 inches respectively). Despite removal efforts, Largemouth Bass are still present and fairly abundant in Harrier, showing the reliance of this species.

**Smallmouth bass** – Smallmouth have been stocked since 2008, with 100 large “retired” brood fish being stocked in 2020. This species has proven difficult to sample in this deep clear lake. Ten Smallmouth Bass were captured in our most recent survey. Eight of these ten fish were between 16 and 18 inches, while two measured between 6 and 8 inches.

**Walleye** – Walleye are stocked annually or biennially based on availability from private hatcheries. Some fish are growing quite large and one Walleye over 23 inches was captured during our 2020 spring electrofishing survey. Thirteen Walleye ranging in length from 9.7 to 23.1 inches were caught in the 2020 survey.

**Yellow Perch** – Initial stocking of Yellow Perch began in 2010. This species is reproducing in Harrier Lake and will hopefully serve as the primary forage base in years to come. Only five perch were caught in 2020 due to the late sample date. Additional sampling of Harrier Lake has yielded perch over 10 inches with numbers being higher in the early Spring (Late April) and later in the Fall (October). Yellow Perch must be nine inches or longer to keep.

**Bluegill and Panfish** – Bluegill catch rates were the highest they have been in recent years with a catch rate of 245 fish per hour (based on a 20-minute sub-sample). This catch rate higher than our management goal of 120 fish per hour. This high catch rate is most likely due to the timing of the survey with the Bluegill spawning season. Eleven percent of the Bluegill sampled measured longer than six inches. This is great to see high numbers of Bluegill as they are an important prey item for many species!

**Channel Catfish** – Five Channel Catfish (20-21 inches) were caught in the most recent survey. Channel Catfish stocking is being suspended as they no longer fit in the management plan of Harrier Lake.

**Summary of Catch at Harrier Lake – June 1<sup>st</sup>, 2020 – 60 minutes DC SPRING electrofishing**

Species	Number Collected	Length (Inches)			Weight (pounds)	
		Min	Max	Avg.	Min	Max
Largemouth Bass*	111	3.9	20.6	9.5	0.1	4.2
Bluegill	85	1.7	7.6	4.3	0.0	0.3
Walleye	13	9.7	23.1	13.0	0.3	3.8
Smallmouth Bass	10	5.6	17.8	13.8	0.1	2.7
Black Crappie	5	7.5	8.7	8.0	0.2	0.3
Channel Catfish	5	20.1	21.7	20.9	3.1	3.7
Yellow Perch	5	5.4	8.8	7.1	0.1	0.3

**Total # of fish collected 234**

**\*Removed**

Two pole and line fishing only.

**\*Largemouth Bass** – 14-18-inch protected slot limit; 4 fish daily creel limit with 3 fish that can be harvested under 14 inches and 1 fish 18 inches and larger. Bass Lake was previously a one fish over 18-inch limit.

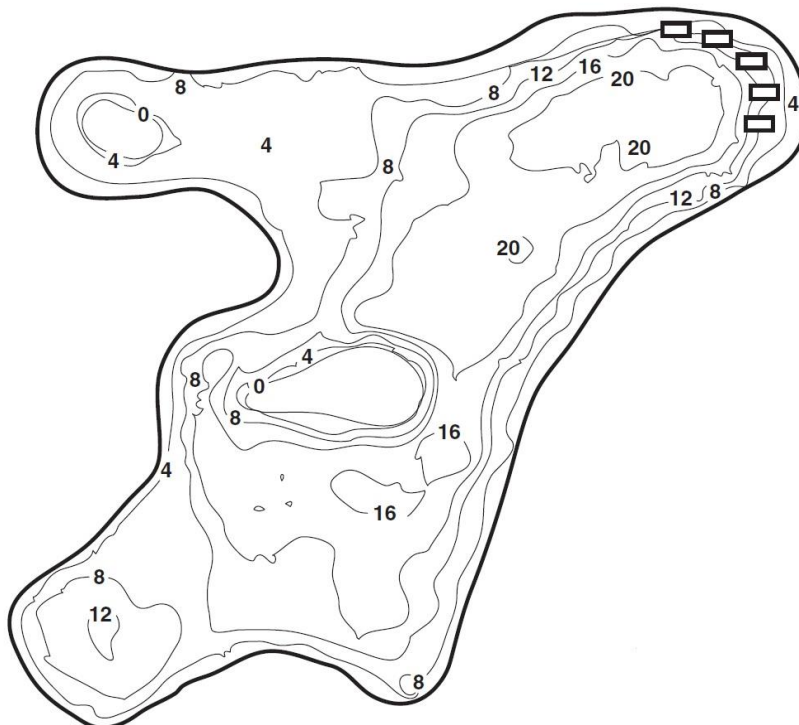
**\*Bluegill** – No minimum length limit; 25 fish daily creel limit

**Channel Catfish** – 12-inch minimum length limit; 3 fish daily creel limit.

**\*White and black crappie** – No minimum length limit; 15 fish daily creel limit.

**\*Yellow Perch** – 9-inch minimum length limit; 5 fish daily creel limit.

**Smallmouth Bass** – Catch and Release fishing only.



***This map courtesy of the Forest Preserve District of DuPage County - "Fishing in Dupage County"***

-For more information or if you have questions call the District's Fisheries Ecologist Dan Grigas at (630) 933-7668 or IDNR Fisheries at (815) 675-2386 ext. 214 or go to: [www.dupageforest.com](http://www.dupageforest.com)

-For general information on fishing in Illinois visit the IDNR Fisheries Division at: [www.ifishillinois.org](http://www.ifishillinois.org)  
**AND** purchase your fishing license online at: [www.dnr.illinois.gov](http://www.dnr.illinois.gov)