



# Great Lakes Quarry

## FISHERIES STATUS SUMMARY

**LOCATION** – Located in southern Cook County, IL in the Village of Lemont.

**DESCRIPTION** – Heritage Quarries were dug in the late 1800's for their dolomite limestone. When mining operations stopped, the quarries filled with water and the quarries were reportedly a source for ice in winter and a popular swimming destination in summer. There are two lakes in the system; Consumers Quarry and Great Lakes Quarry. Consumers Quarry does not offer trailered boat access. Great Lakes Quarry does and covers 41.1 acres; shoreline length 2.5 miles; watershed 106 acres (2 to 1); maximum depth reported at 45 feet; average depth reported at approximately 15 feet. There is a single, gravel boat ramp on the west end of the lake and a carry in access in the east end. No concessions boat and motor rental, live bait/tackle shop of available on premises. Portable toilets are located throughout the property. There are No fish cleaning facilities on the property.

**MANAGEMENT ACTIVITIES:** The fishery in Great Lakes Quarry has been surveyed twice in the recent past: once in 2013 and in 2018. Very little fisheries or habitat management has occurred in the system. The Village of Lemont entered into a Cooperative Management Agreement with the IDNR Division of Fisheries in 2018. Size and Catch limits will be implemented April 1, 2019.

**STATUS OF THE SPORT FISHERY** – Table 1 shows the fish species present in Great Lakes Quarry. There is very little information available regarding past stocking of the system. Below is a brief description of catchable game species in this water body.

**LARGEMOUTH BASS** – In fall 2018, 120 bass were collected in 60 minutes of DC electrofishing. Fish measured between 3.5" and 21.1", and weighed up to 6.5 lbs. 64% of the bass were >12", 36% were >14" (legal length), 25% exceeded 15" and 20% exceeded 16" in length. The size structure of this fishery provides fishermen with a very nice sport fishing experience.

**BLUEGILL** – In 2018, 87 Bluegill were collected in 60 minutes of DC electrofishing. Fish ranged from 1.2" to 7.4". 60% of the bluegill exceeded 6" and 12% were longer than 7". No bluegill over 8" were collected but our goal is to develop a fishery with 8"+ bluegills!

**BLACK CRAPPIE** – 17 Black were collected during the fall survey in 2018. Fish from 5.8" to 10.3" were collected. 71% of the crappie collected were >8", 59% were >9" and 12% were >10". These are reasonable size fish; our goal is to increase the number of crappie over 10" long.

Table 1. Catch Summary 10/28/2018

( 60 minutes DC electrofishing )					
Species	Number	Relative Abundance (%)	Minimum (inches)	Average (inches)	Maximum (inches)
LARGEMOUTH BASS	120	50.2	3.5	11.6	21.1
BLUEGILL	87	36.4	1.2	4.8	7.4
BLACK CRAPPIE	17	7.1	5.8	8.3	10.3
WARMOUTH	12	5.0	4.4	5.7	7.1
BLUEGILL HYBRID	2	0.8	5.8	6.4	7.0
GREEN SUNFISH	1	0.4		4.4	
<b>SPECIES = 6    TOTAL =</b>	<b>239</b>	<b>100.0</b>			

**FISHING REGULATIONS** – Statewide fishing regulations apply at this lake (see current Illinois Fishing Information booklet and IFISHILLINOIS website <http://www.ifishillinois.org/> for specific details).

**Additional Site Specific Fishing Regulations:**

Boaters – electric motor only

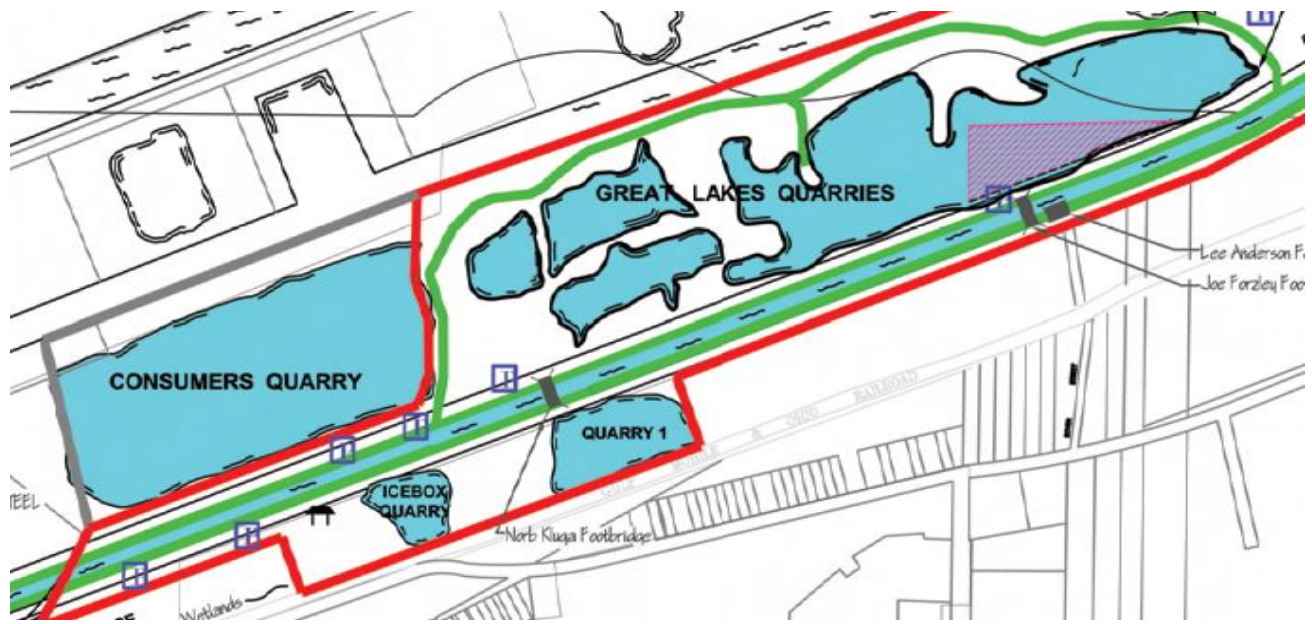
Bluegill, Redear or Hybrid sunfish – 15 fish daily creel limit, no size limit.

Black or White crappie – 15 fish daily creel limit, no size limit.

Largemouth Bass – 3 fish daily creel limit, 14” minimum length limit.

**CONTACT INFORMATION** – Village of Lemont: 630/257-1590.  
IDNR District Fisheries Biologist: 815/675-2319.

**Great Lakes Quarry Map**



(Village of Lemont Publication)